

PLEASE CHECK WWW.MOLEX.COM FOR LATEST PART INFORMATION

Part Number: [0438100046](#)
Status: **Active**
Overview: Mini-Fit Family Power Connectors
Description: Mini-Fit BMI Header, Dual Row, Right-Angle, for 2.39mm PCB, 6 Circuits, Tin (Sn) Plating, 260C Wave Solderable, with Retention Clip

Documents:

Drawing (PDF)	Product Specification PS-45750-001-001 (PDF)
3D Model	Packaging Specification PK-43810-001-000 (PDF)
3D Model (PDF)	RoHS Certificate of Compliance (PDF)
Product Specification PS-43810-001-001 (PDF)	

Agency Certification

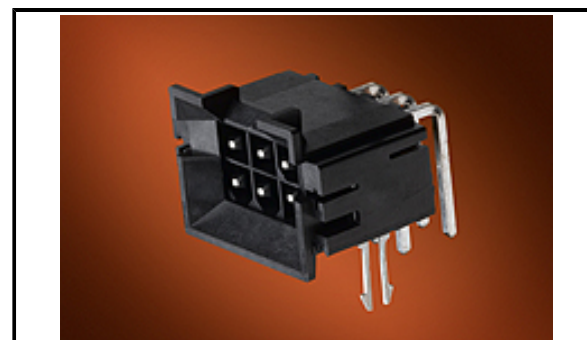
CSA	LR19980
UL	E29179

General

Product Family	PCB Headers
Series	43810
Application	Board-to-Board, Power, Wire-to-Board
Comments	Current = 13A max. per circuit when header is mated to a receptacle loaded with 45750 Mini-Fit Plus HCS Crimp Terminal Crimped to 16 AWG wire. See Molex product specification PS-45750-001 for additional current de-rating information.
Overview	Mini-Fit Family Power Connectors
Product Name	Mini-Fit BMI
Taxonomy	PCB Headers and Receptacles
UPC	800753301016

Physical

Breakaway	No
Circuits (Loaded)	6
Circuits (maximum)	6
Color - Resin	Black
Durability (mating cycles max)	30
Flammability	94V-0
Glow-Wire Capable	No
Material - Metal	Brass
Material - Plating Mating	Tin
Material - Plating Termination	Tin
Material - Resin	High Temperature Thermoplastic
Net Weight	4.436/g
Number of Rows	2
Orientation	Right Angle
PC Tail Length	3.63mm
PCB Locator	No
PCB Retention	Yes
PCB Thickness - Recommended	2.39mm (.094")
Packaging Type	Tray
Pitch - Mating Interface	4.20mm
Pitch - Termination Interface	4.20mm
Plating min - Mating	2.540µm
Plating min - Termination	2.540µm
Polarized to Mating Part	Yes
Polarized to PCB	Yes
Shrouded	Fully



Series image - Reference only

EU ELV

Not Relevant

EU RoHS

Compliant

REACH SVHC

Not Contained Per - D(2022)4187-DC (10 June 2022)

Halogen-Free

Status

Not Low-Halogen

For more information, please visit [Contact US](#)

China ROHS

ELV

RoHS Phthalates

China RoHS

Green Image

Not Relevant

Not Contained

Search Parts in this Series

[43810](#) Series

Mates With

[42385](#) , [42474](#) , [44475](#) , [44516](#) , [5557](#) Dual Row, [245135](#) Mini-Fit Jr. Cable Assembly

Stackable	No
Surface Mount Compatible (SMC)	Yes
Temperature Range - Operating	-40° to +105°C
Termination Interface: Style	Through Hole

Electrical

Current - Maximum per Contact	13.0A
Voltage - Maximum	600V AC (RMS)/DC

Solder Process Data

Duration at Max. Process Temperature (seconds)	005
Lead-free Process Capability	WAVE
Max. Cycles at Max. Process Temperature	001
Process Temperature max. C	240

Material Info**Reference - Drawing Numbers**

Packaging Specification	PK-43810-001-000
Product Specification	PS-43810-001-001, PS-45750-001-001
Sales Drawing	SD-43810-031-000

This document was generated on 10/14/2022

PLEASE CHECK WWW.MOLEX.COM FOR LATEST PART INFORMATION